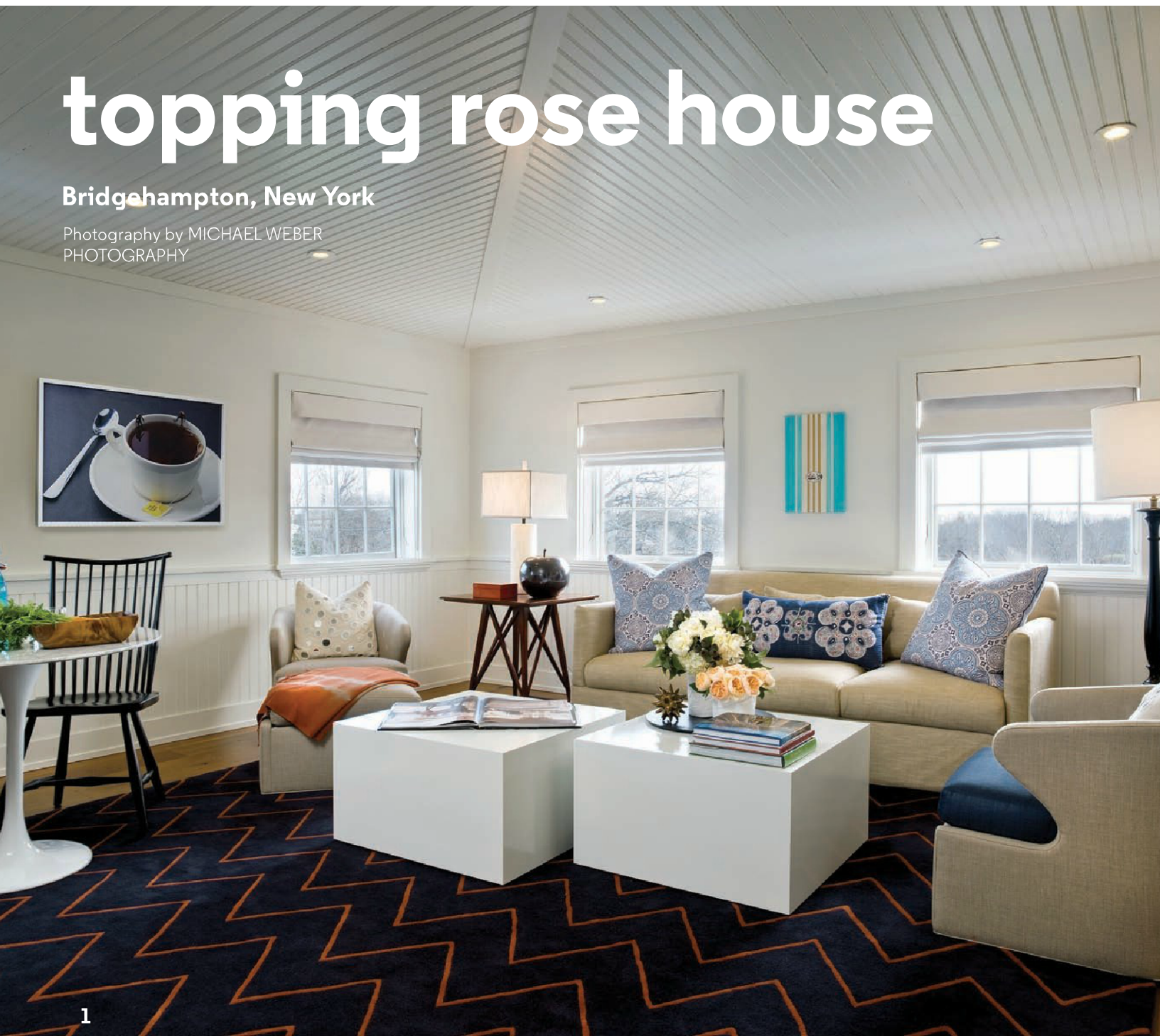


topping rose house

Bridgehampton, New York

Photography by MICHAEL WEBER
PHOTOGRAPHY

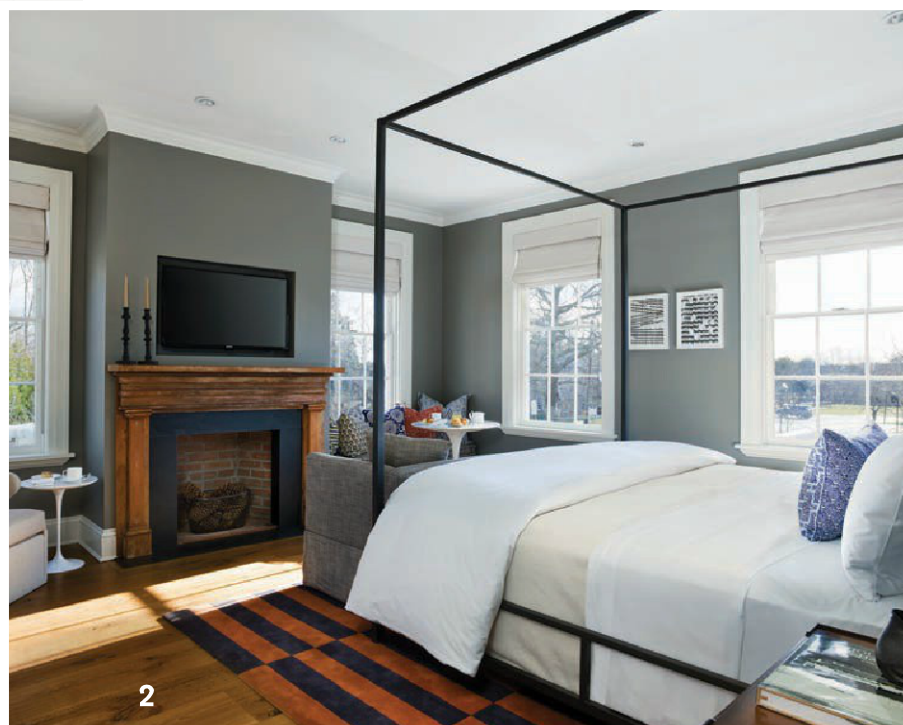


1

1. Graphic pillows and carpet are bold accents in the Main House living rooms, where black Windsor chairs and mid-century designed tables reference the old and new aesthetic.

2. Warm gray walls and a four-poster bed in a Main House guestroom are a perfect background to colorful textiles and modern art pieces.

3. Spacious bathrooms in the Main House suites feature dark stone vanity tops that contrast the dominant white and tan palette.



2



Owners

Bill Campbell and Simon Critchell

Management Company

Craft New York

Architecture Firm

Roger Ferris + Partners, New York

Interior Design Firm

Champalimaud, New York

Interior Design Team

Alexandra Champalimaud, Winston Kong, and Elisabeth Rogoff

Contractor

JGF Pinnacle

Purchasing Firm

Purchasing Associates

Civil Engineering

The Raynor Group

Landscape

Araÿs Design

Art Consultant

Christine Wächter

MAIN HOUSE GUESTROOM

Casegoods

Les Meubles Saint-Damase and Motif Designs

Fabric

Casamance, Fabricut Contract, and Romo

Furniture

Bright and Textstyle/Jamie Stern

Flooring

Madeline Weinrib

Lighting

Artemide

Accessories

John Robshaw Textiles, Madeline Weinrib, and Howard Elliott

Art

Christine Wächter

MAIN HOUSE BATHROOM

Mirror

Alpine Art & Mirror

Lighting

Foscarini

MAIN HOUSE LIVING ROOM

Casegoods

Les Meubles Saint-Damase, Motif Designs, and Gordon International

Furniture

Bright, Textstyle, and Windsor Workshop

Fabrics

Romo

Flooring

Madeline Weinrib

Lighting

Visual Comfort and Arteriors

Accessories

John Robshaw Textiles and Arteriors

Art

Christine Wächter